

Exceptional
Mornings

With OPM RD

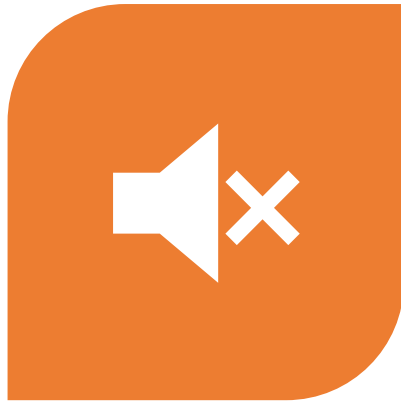




Agenda

- SCORE Overview
- Questions to ask during re-evaluation
- Bi-annual re-evaluations: what should I track?

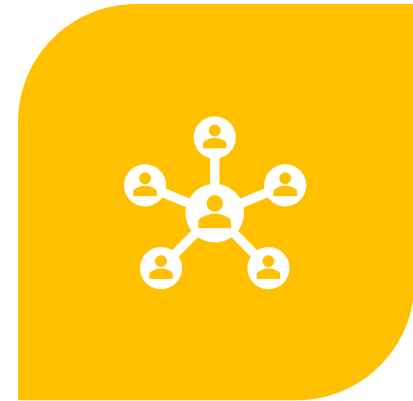
Housekeeping



KEEP DEVICES ON MUTE UNLESS
YOU ARE SPEAKING TO THE
MEETING ATTENDEES.



ASK QUESTIONS.



ENGAGE WITH OTHERS.



Question

What are the contact requirements for Resource Development workers?

Monthly Contact: Policy 14.16

Face to face, telephone,
email, etc.

Purpose: to conduct an
ongoing assessment
around functioning,
safety, and well-being in
the foster home.

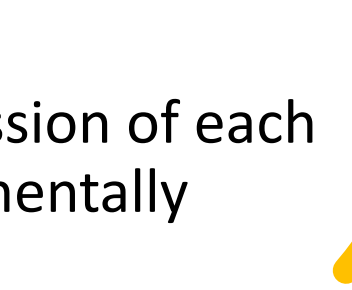
Separate quality time
with each foster parent
and each child.

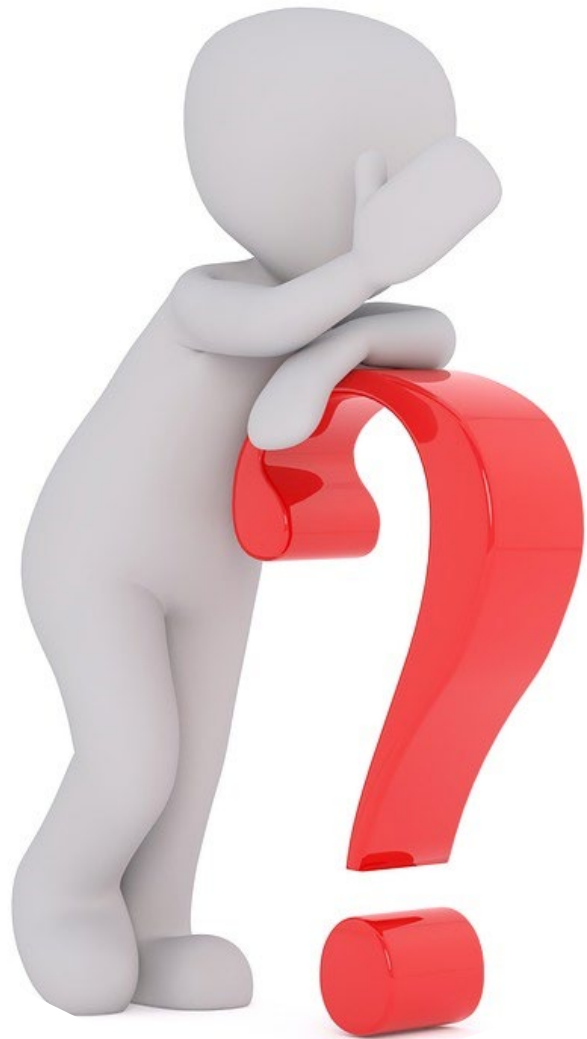
Quality engagement with
all other adult household
members and children
living in the home.

Observation of family
interactions.

Review of caregiver
records and discussion of
each child's involvement
in age or developmentally
appropriate activities.

Quarterly Home Visit Policy 14.16

- Separate quality time with each foster parent.
 - Separate quality time with each child placed in the foster home.
 - Quality engagement with all other adult household members and children living in the home (individually or in a group) to discuss family functioning, roles & responsibilities of household members and the children's SSCM, how fostering has impacted them as a family, their likes/dislikes, and any needs they may have
 - Observation of family interactions.
 - Review of caregiver records and discussion of each child's involvement in age or developmentally appropriate activities.
- 



Share one thing
that has happened
in your life in the
past year...

What questions are you asking for...

- Home & Community
- Marriage/Partnership
- Family Lifestyle
- History/Personal Characteristics
- Child - Care
- Extended Family
- Physical/Social Environment
- Specialized Parenting
- Adoption/Foster Care





Question...

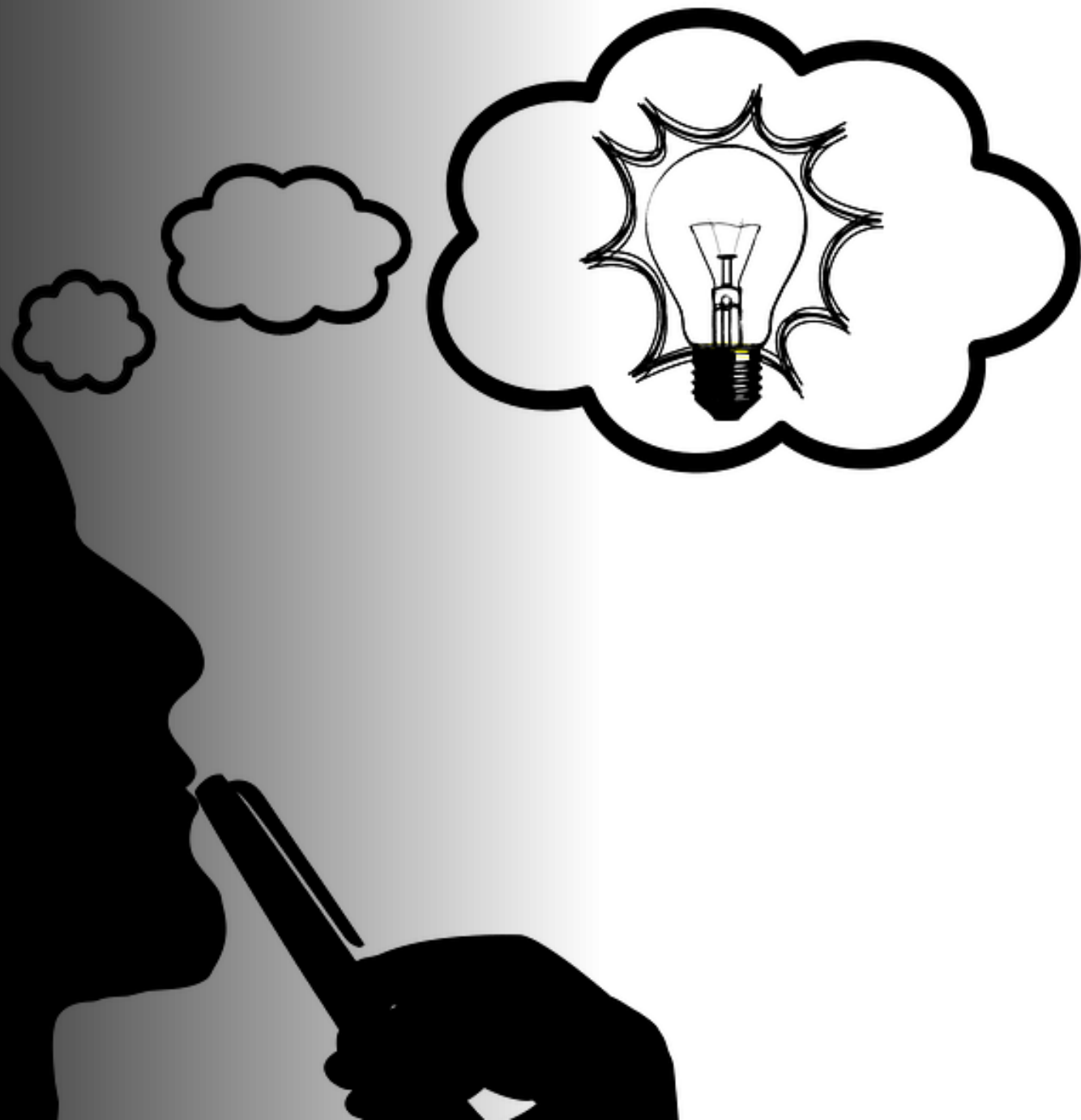
- What do your visits look like?
- What else are you “looking” at? (CPR/First Aid, Insurance, etc.)





First Time Placements

What does contact/visits look like for these families?



Biannual Re-evaluations:

- What should tracking look like?
- What things should your agency track?
- GCIC/NCIC, CPR/First Aid, Training Hours, Medicals, Member turning age 18



Reminders...

Enter	Enter 2023 training hours in SCORE by October 31, 2023.
Update	Update approval letters to reflect biannual terms.
Ensure	Ensure placement preference forms are accurate for the Argo tool.
Assess	Assess race in the home study based on placement preference form.

Thank you for all
that you do for
Georgia's
children!!!

